

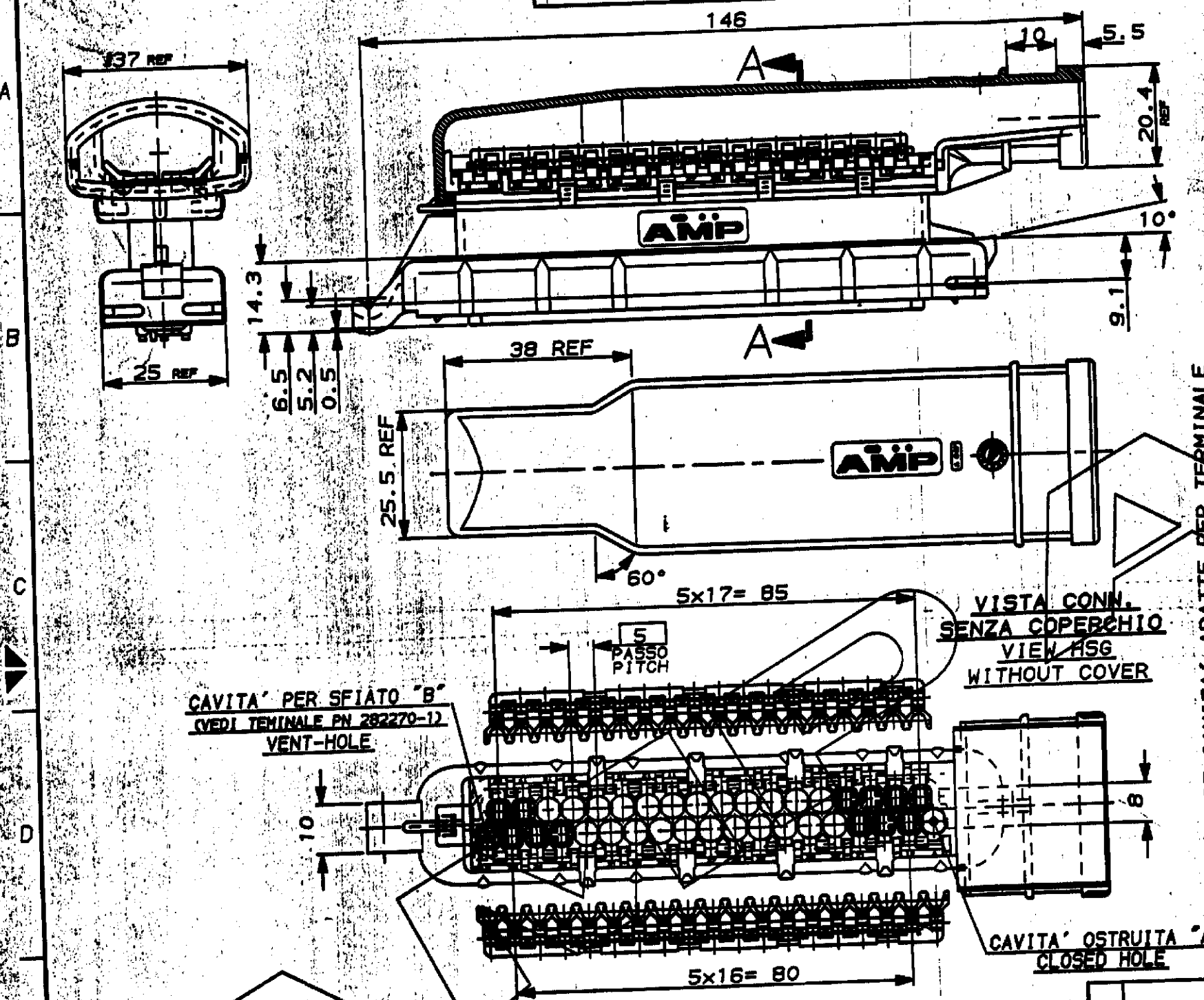
STANDARD VERSION

SCALA NON IMPERATIVA
(DO NOT SCALE)
DIMENSIONI IN mm
(DIMENSIONS IN mm)

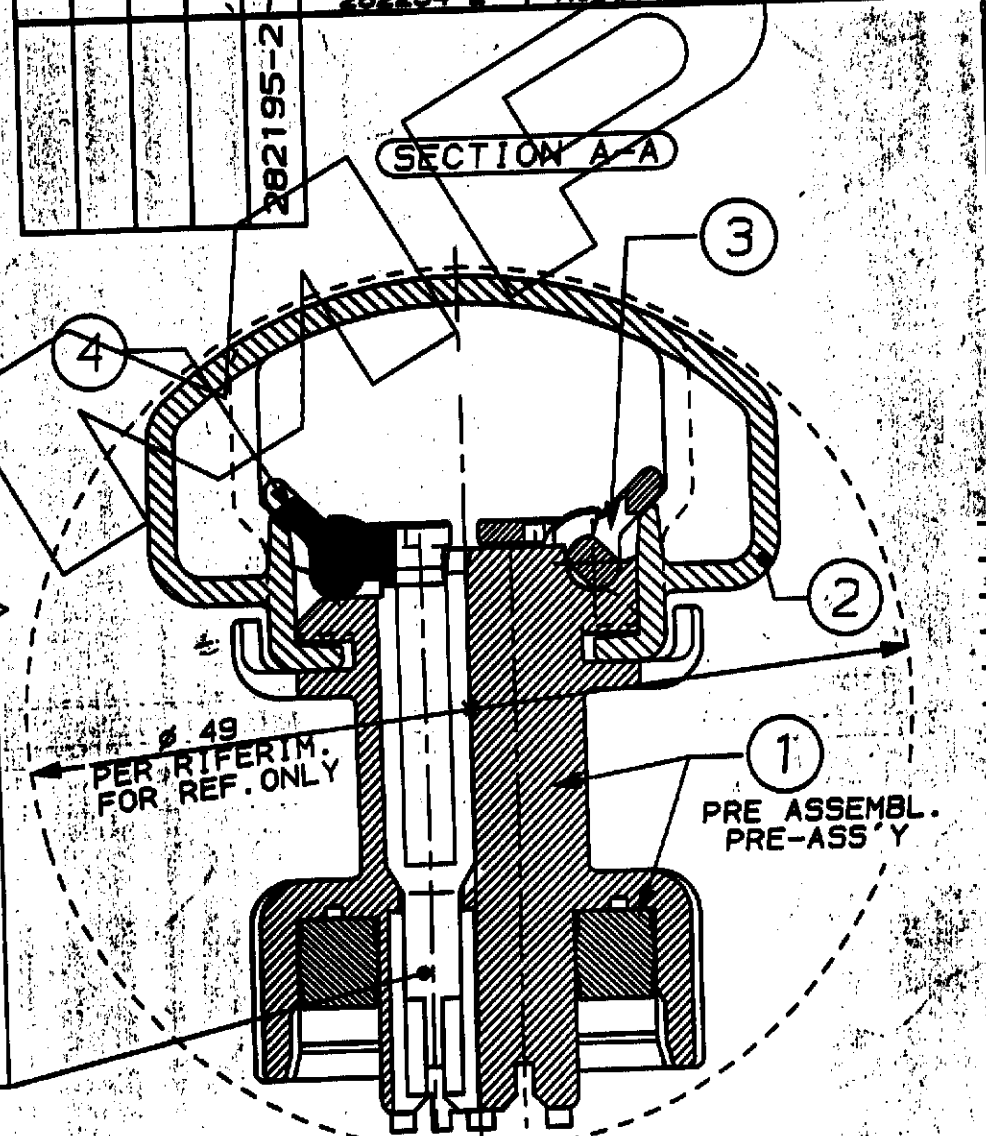
METRIC

PROIEZIONE EUROPEA
(EUROPEAN PROJECTION)

Q.TY REQ'D PER ASS'Y		PART. LIST		
		PART. NO.	DESCRIPTION	QTY
	1	282267-1	SEC. LOCK 19 POS.	4
	1	282266-1	SEC. LOCK 18 POS.	3
	1	282268-1	COVER	2
	1	282264-2	HOUSING ASS'Y	1



N°35 CAVITA' ADATTE PER TERMINALE "AMP JUNIOR POWER TIMER" E RELATIVI GOMMINI.
N°35 CAVITIES SUITABLE FOR "AMP JUNIOR POWER TIMER" CTS.



CAVITA' PER SFIATO "B"
(VERI TERMINALE PN 282270-12)
VENT-HOLE

VISTA CONN.
SENZA COPERCHIO
VIEW HSG
WITHOUT COVER

CAVITA' OSTRUITA "A"
CLOSED HOLE

BLACK	1	282195-2
COLOUR	MATERIALE (MATERIAL)	NUMERO (PART NUMBER)

CUSTOMER DWG. FOR REFERENCE ONLY
DISEGNO PER CLIENTE SOLO PER RIFERIMENTO

THIS DRAWING IS UNPUBLISHED
© COPYRIGHT 1980 BY AMP INCORPORATED, PITTSBURGH, PA. ALL INTERNATIONAL RIGHTS RESERVED. AMP PRODUCTS MAY BE COVERED BY U.S. AND FOREIGN PATENT AND/OR PATENT PENDING.
TOLLERANZE, SE NON DIVERSAMENTE SPECIFICATO
TOLERANCES, UNLESS OTHERWISE SPECIFIED
± 0.3
ANGOLI CANGIATI ± 2°
DIS. E. CINI 11 MAY 1980
DESCRIZIONE (DESCRIPTION)
35 P. SPLASH PROOF CONN. WITH SECONDARY LOCK
AMP ITALIA S.p.A. Corso P. LLI Garvi, 18 COLLENO (TORINO)

NOTES:

- 1 MATERIALI: HSG, COVER AND SEC. LOCKS IN PA 66 GLASS FILLED - SEALING OF SILICONE RUBBER
- 2) ITEMS 1, 2, 3, 4 PACKAGE INTO A CARTON BOX.

NOTE:

- 1 MATERIALI: -BLOCCHETTO, COPERCHIO E SEC. LOCK IN PA 66 CAR. VETRO - GUARNIZIONE IN SILICONE (Col. ROSSO)
- 2) I PART. 1, 2, 3, 4 SONO CONFEZIONATI IN KIT IN UN'UNICA SCATOLA DI CARTONE.

REV.	REVISIONI (REVISION RECORD)	DIS. (DRAWN)	DATA (DATE)	CONT. (CHECKED)	APP. (APPROVED)	LOC. (LOCATION)	SIZE (SIZE)	NUMERO (NUMBER)	REV. (REV.)	FOGLIO (SHEET)
A	RELEASED FOR PRODUCTION EC ET00-0175-83									
I A3 C-282195 A 1										

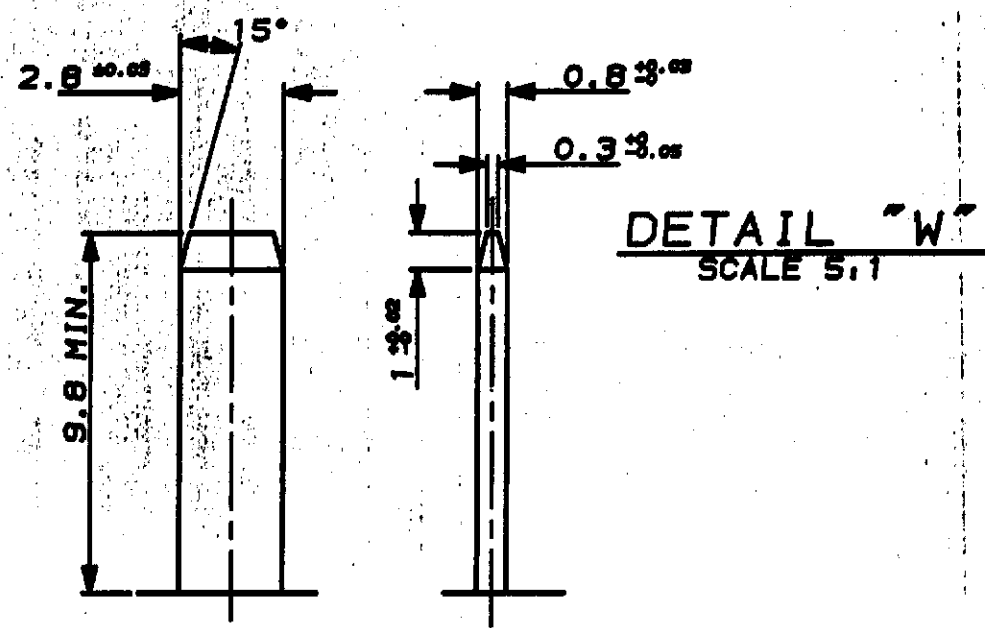
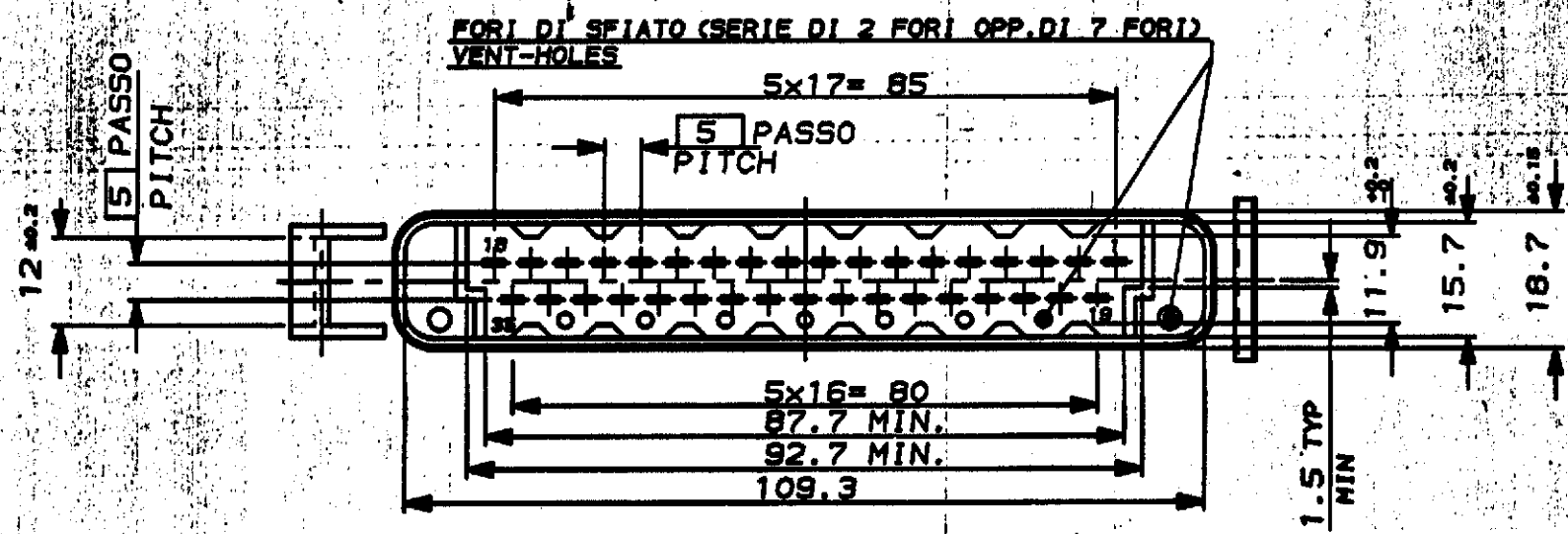
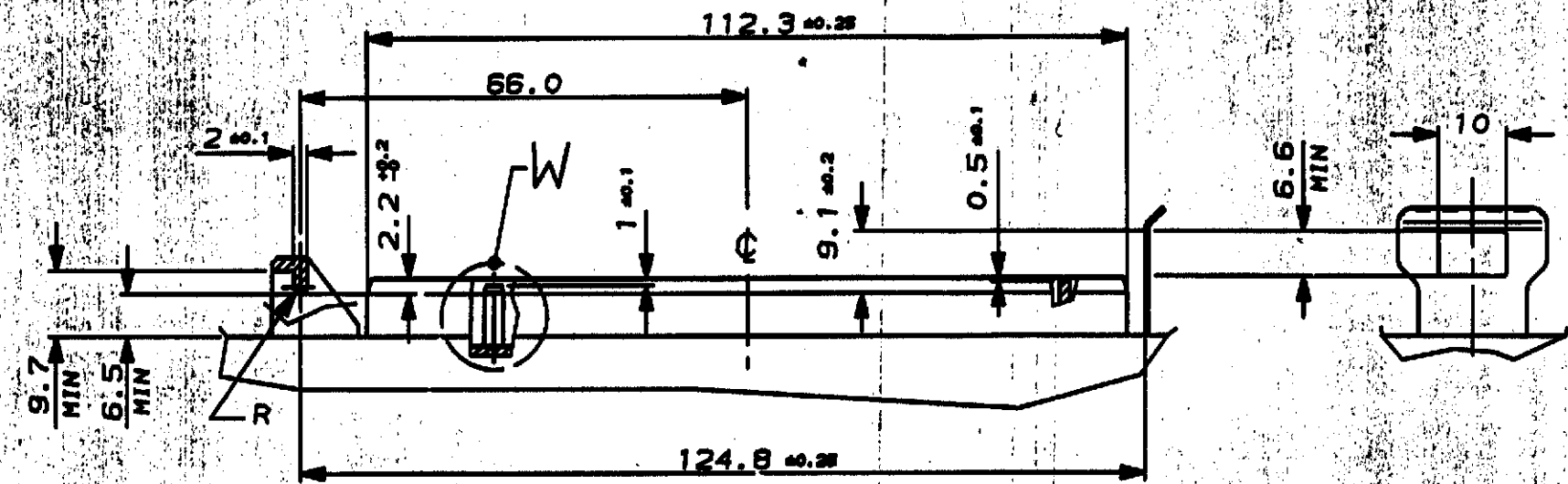
STANDARD VERSION

SCALA NON IMPERATIVA
(DO NOT SCALE)
DIMENSIONI IN mm
DIMENSIONS IN mm

METRIC

PROIEZIONE EUROPEA
EUROPEAN PROJECTION

INTERFACCIA D'ACCOPIAMENTO COUNTERPART



SEE SHEET 1 OF 2

(FINISH / COLOUR)	MATERIALE (MATERIAL)	NUMERO (PART NUMBER)
CUSTOMER DWG. FOR REFERENCE ONLY	DISEGNO PER CLIENTE SOLO PER RIFERIMENTO	
THIS DRAWING IS UNPUBLISHED		
© COPYRIGHT IS BY AMP INCORPORATED, HARTFORD, PA. ALL INTERNATIONAL RIGHTS RESERVED. AMP PRODUCTS MAY BE COVERED BY U.S. AND FOREIGN PATENT AND/OR PATENT PENDING TOLERANCE, SE NON DIVERSAMENTE SPECIFICATO		
± 0.3	DIAM. ISOLANTE (INS. DIA. RANGE)	RANGO FILO (WIRE RANGE)
ANGOLI (ANGLES) ± 2°		SCALA (SCALE)
AMP AMP ITALIA S.p.A. Corso P.lli Garvi, 18 COLLENO (TORINO)		
DIS. E.CINI 30 NOV. '82 CONT. - 28NOV.93 C. TARTARI		
DESCRIZIONE (DESCRIPTION) 35 P. SPLASH PROOF CONN. with SECONDARY LOCK		
REV. DATA (REV. DATE)	APP. CAP. (APP. CAP.)	LOC. SIZE NUMERO (LOC. SIZE NO.)
		REV. (REV.)
		FOGLIO (SHEET) DI (OF) 2
		IA3C-282195 A 22

DISTRIBUZIONE
PRINT (DISTR.)