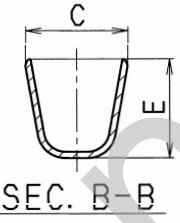
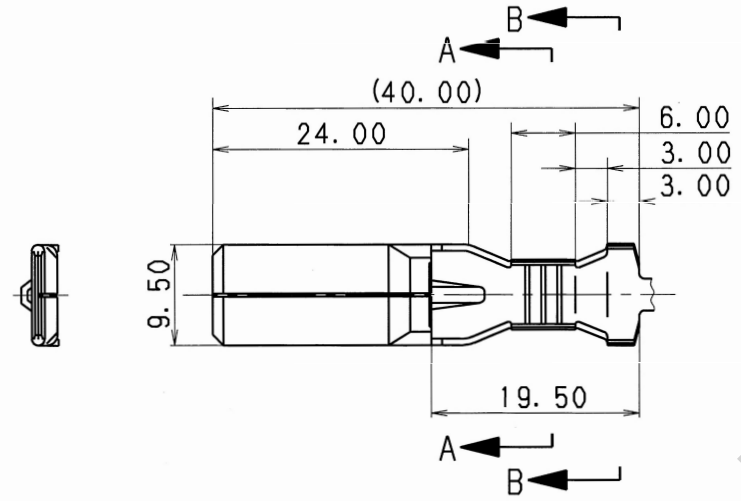
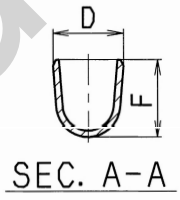
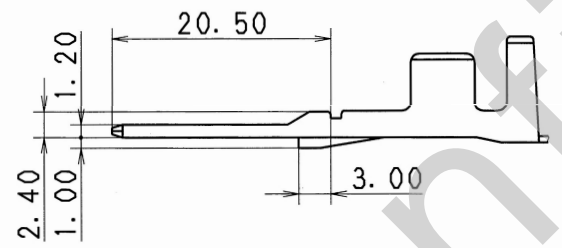


△ NO.	YAZAKI PART NO. AND CH. CODE	C	D	E	F	APPLICABLE WIRE	△ MASS
1	7114-3250	9.60	6.60	△(9.50)	(7.30)	△ AV 5~8, AVS 5	△(4.0 g)
2	7114-3251	7.20	4.80	△(8.70)	△(5.10)	△ AV 3, AVS 3, AVS 3f	△(3.6 g)



- △ 注記
- 1. かん合メスターミナル品番 : 7116-3250 ETC.
 - △ 2. かん合コネクタ品番 : 7122-4110 ETC. : 7122-4310-30 ETC.

- △ NOTES
- 1. MATING FEMALE TERMINAL PART NO. : 7116-3250 ETC.
 - △ 2. MATING CONNECTOR PART NO. : 7122-4110 ETC. : 7122-4310-30 ETC.



△ 2018/09/07	DELETED PART NO. ETC.	C18-Z097	G. M					ISSUE MARK								
△ 2016/08/04	CHANGED APPLICABLE WIRE SIZE, ETC.	C16-Z607	A. Q	CUSTOMER △				MATL. SPEC. △ COPPER ALLOY (t=0.6)	TREAT. & FIN. △ TIN PLATING							
△ 2002/05/30	CHANGED TOLERANCE ETC.	C02-X619	K. U	CUSTOMER PART NO.		CUSTOMER DWG NO.		NAME △ L TYPE MALE TERMINAL								
△ 1990/01/29	RENEW	C90-L039	H. Y	OFFICE △		TRIAL PART NO.										
LET	DATE	REVISION RECORD NO.	CHKD	VENDOR		VENDOR NO.										
GENERAL TOLERANCE																
	10MAX	50MAX	100MAX	250MAX	2500VR	ANGLE	ECCENT	DWG TYPE	DWG SOURCE	DWG DATE	UNIT	SCL	ANGLE	PART NO.	7114-3250 ETC.	
A	±0.15	±0.2	±0.3	±0.5	±0.75	±30'	0.1	R	NEW	1983/03/10	mm	2:1	3	CH. CODE		
B	±0.2	±0.3	±0.55	±0.95	±1.4	±30'	0.1	APPROVED	CHECKED	CHECKED	DESIGN	DRAWN	DWG NO. △	7114-3250:R	SET DWG NO.	
△	±0.3	±0.5	±0.8	±1.4	±2	±30'	0.15	M. NAKAMURA		INABA		G. WANDERICO		YAZAKI CORPORATION		
SPECIFIED			MASS		△ SEE TABLE		2018/09/07		1983/03/11		2018/09/07					