

THIS DRAWING IS UNPUBLISHED. RELEASED FOR PUBLICATION
 © COPYRIGHT 2000 ALL RIGHTS RESERVED.

| LOC | DIST | REVISIONS | | | | | |
|-----|------|-----------|-----|---------------------------|-----------|-----|------|
| | | P | LTR | DESCRIPTION | DATE | DWN | APVD |
| J | | | A3 | REVISED PER ECO-11-005140 | 05APR2011 | RK | HMR |

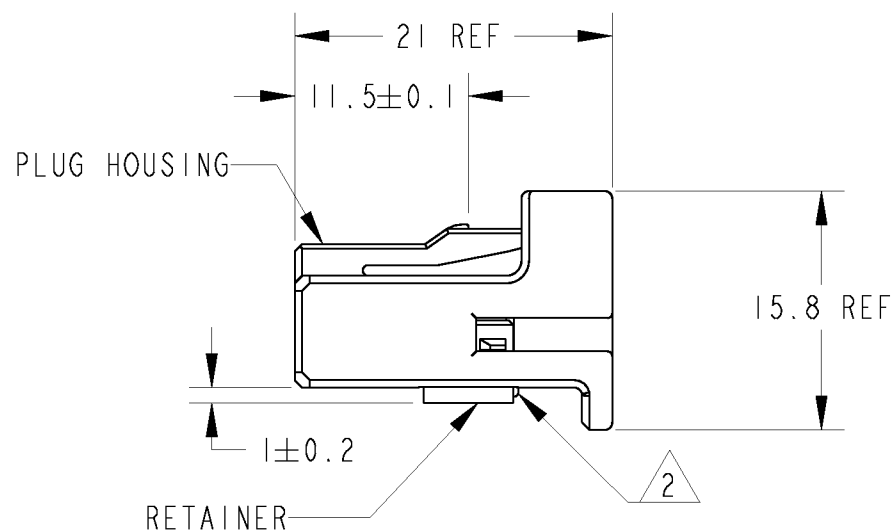
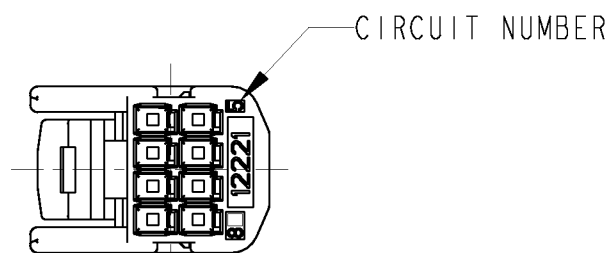
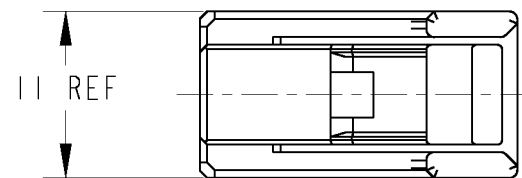
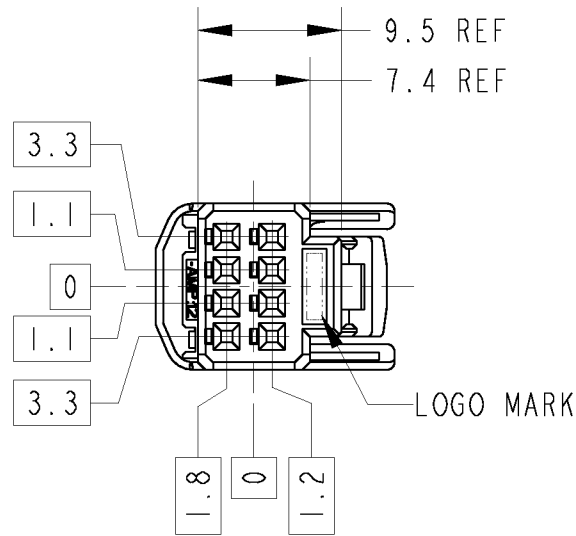


TABLE-1

| POS. 極数 | CAP ASSEMBLY P/N |
|------------|---------------------|
| 8 | 1376350 |
| | 1473793 |

TABLE-2

| | FINISH めっき | TERMINAL P/N 端子型番 | APPLICABLE WIRE RANGE 適用電線 |
|---------------|----------------|----------------------|---|
| SIGNAL 025 | TIN | 1123343-1 | AVSS/AVSSH-f/AESSX 0.3~0.5mm ² |
| | SELECTIVE GOLD | 1123343-2 | CAVS/CAVUS 0.22~0.5mm ² |

- RETAINER SHOULD BE SET TO THE PRE-ASSEMBLY POSITION WITHIN THE PLUG HOUSING WHEN SHIPPED TO THE CUSTOMER.
- △ THE RETENSION LATCH OF THE PLATE MUST BE OUT SIDE OF PLUG HOUSING WHEN PRE-ASSEMBLY.
- RETAINER RETENSION FORCE FROM HOUSING;30N MIN.
- INSTRUCTION SHEET NO.411-5928
- PART NO. OF CAP HOUSING TO BE MATED ; SEE TABLE-1
- APPLIED TERMINAL ; SEE TABLE-2

- プラグハウジングにリテーナを仮止めして出荷される。
- △ 仮係止時リテーナ突起がハウジングの外側に出ていること。
- リテーナの仮係止保持力は30N MIN.
- 取扱説明書NO. 411-5928
- 嵌合相手ハウジング型番 ; TABLE-1参照
- 適用端子 ; TABLE-2参照

| PACKING STYLE 梱包形態 | COLOR | PART NUMBER |
|-----------------------|-------------|-------------|
| PAPER BOX ダンボール | BLACK | 1376352-2 |
| PLASTIC BAG ビニール袋 | NATURAL | 1376352-1 |
| OUTER 外装 | INNER 内装 | |

THIS DRAWING IS A CONTROLLED DOCUMENT.

| | | | |
|----------------------------|---|-------------------------------------|--|
| DIMENSIONS: 単位: 概 mm | TOLERANCES UNLESS OTHERWISE SPECIFIED: 一般公差 = ± 0.3 | DWN N. YASUDA 05JUL00 | TE Connectivity |
| | 0-PLC ± 1-PLC ±0.5 2-PLC ±0.13 3-PLC ±0.013 4-PLC ±0.0001 ANGLES ±3° | CHK N. SAI 06JUL00 | |
| | MATERIAL 材料 PBT | FINISH 仕上 NATURAL | |
| | | PRODUCT SPEC 製品規格 108-5668 | NAME 名称 025 SERIES I/O CONNECTOR 8POSITION PLUG HOUSING ASSEMBLY |
| | | APPLICATION SPEC 取付適用規格 114-5250 | SIZE A3 |
| | | WEIGHT 1.6 g | CAGE CODE 00779 |
| | | CUSTOMER DRAWING | DRAWING NO C=1376352 |
| | | SCALE 尺度 2:1 | RESTRICTED TO |
| | | SHEET 1 OF 1 | REV A3 |